

BUSINESS PLAN 2025 - 2027

OUR BELIEFS



OUR MISSION

Built upon a proud history, Boulder Primary School provides an inclusive learning environment, nurturing individuality, and wellbeing. Boulder Primary School, founded on quality teaching, provides educational programs ensuring every student the opportunity to achieve academic excellence.

OUR VISION

Boulder Primary School strives to be a lighthouse for education in the Goldfields region. A school which fosters and sustains a safe and supportive environment where we inspire active, successful, and informed citizens who become lifelong learners.

OUR MOTIF

Our motif represents coming together at our meeting place, school. Our students are in the centre, with the staff, parents and community members surrounding them in support.

OUR MOTTO

Learning for Living
Nintipayi
 Nintipayi in Wangkatja translates to 'knowledge'.

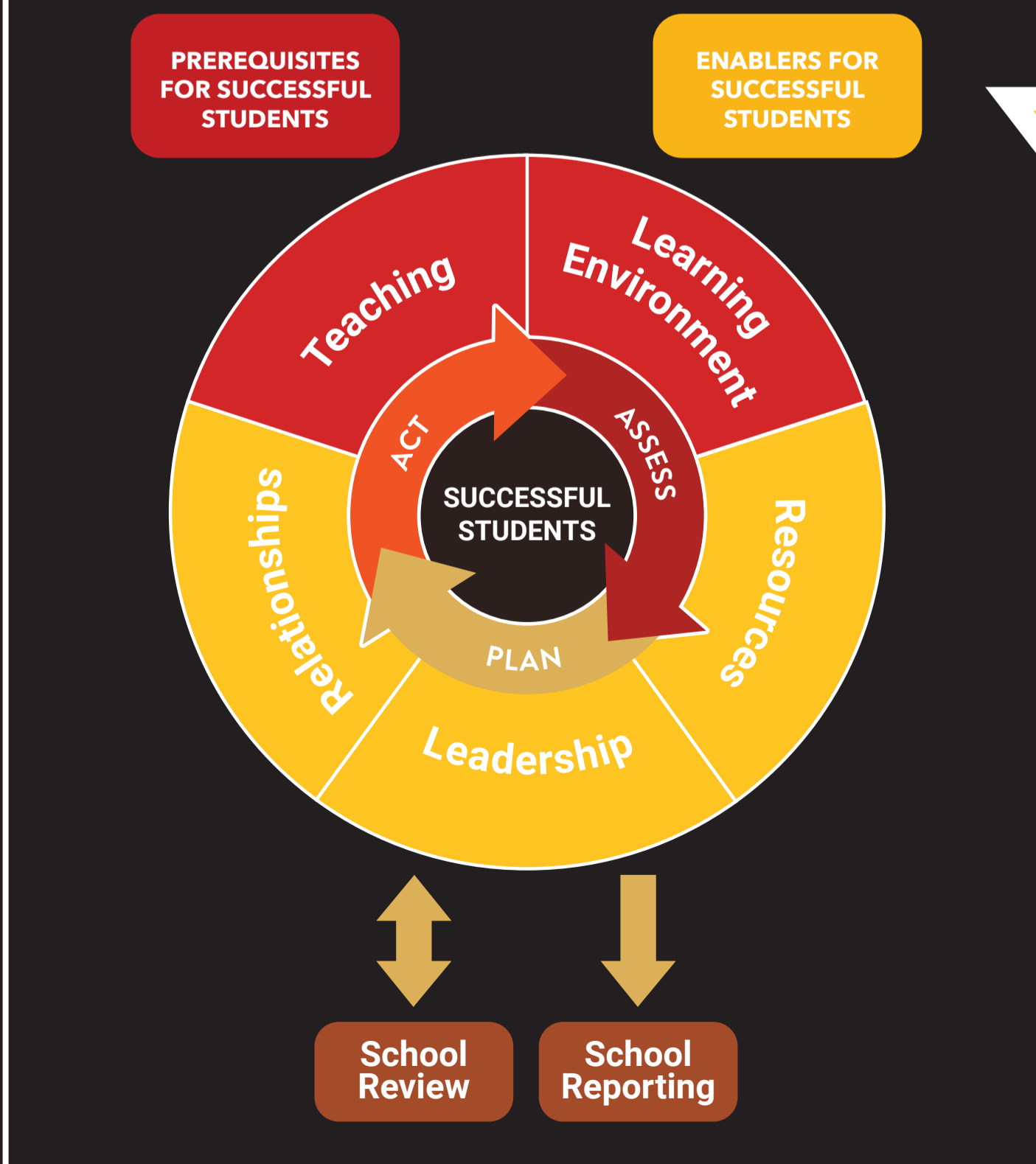
OUR VALUES



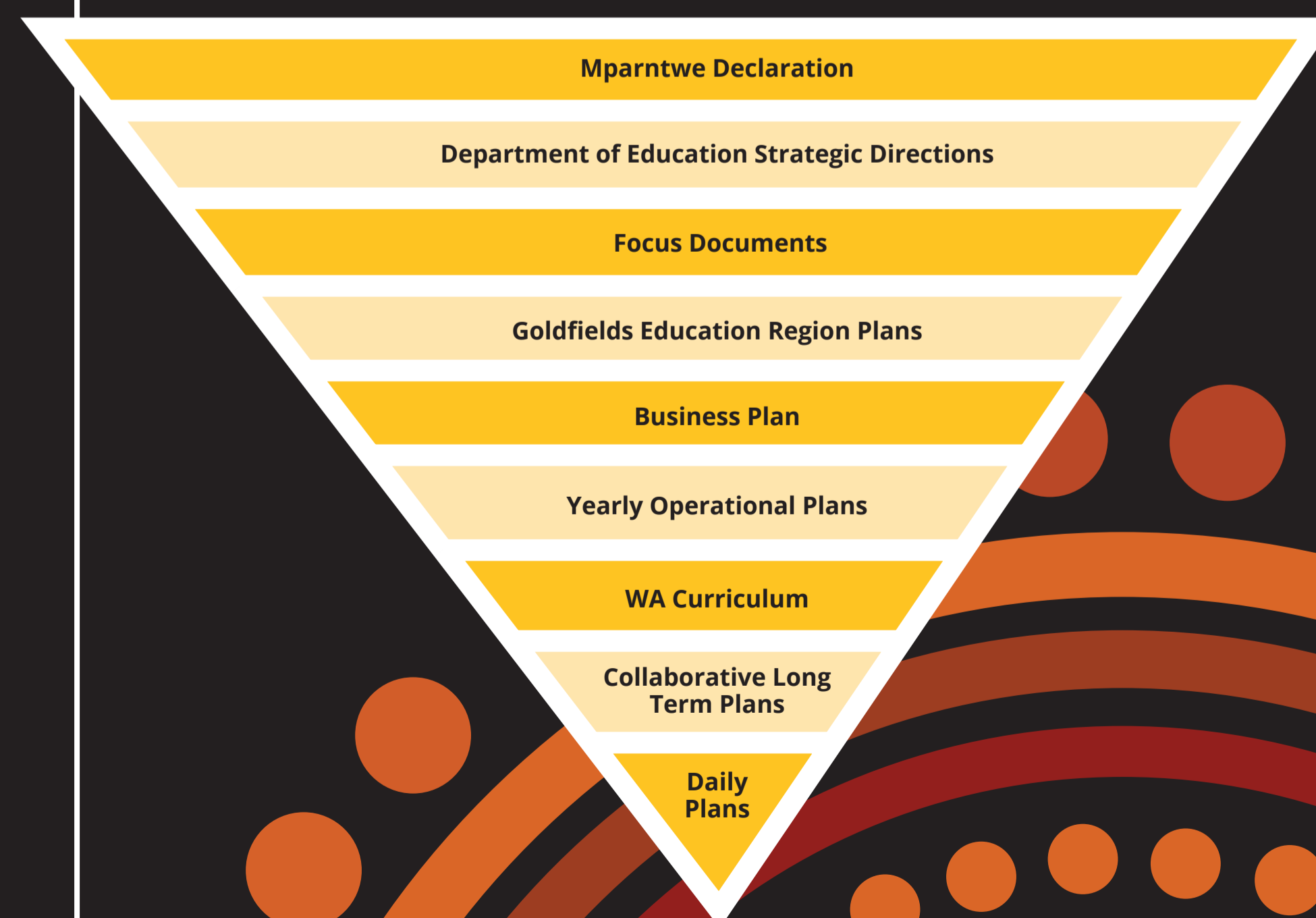
OUR STRENGTHS AND IMPROVEMENT AREAS

Strengths	Improvement Focus Areas
A culture of a whole school approach	Strengthen the induction process for new staff
A robust, structured, and consistent approach to the teaching and learning of Literacy and Numeracy	Strengthen the teaching and learning of Numeracy
A continued whole school approach to Social and Emotional Learning, embedding the pillars to support a positive learning environment	Improve differentiation in teaching and learning, in particular the extension of students
A whole school approach to behaviour development that is responsive and consistent	Consolidate the Performance Development model and extend this to include all staff
A continued focus on Professional Learning and building the capacity of staff	Embed a focus on technology integration and STEM education
A robust distributed leadership model	Targeted support for Behaviour Development
Positive relationships with families and the wider community	Strengthen connection to local Aboriginal culture and language
Allocation of school resources (human, physical and financial) to school and system priorities	

IMPROVEMENT MODEL



OUR PLANNING STRUCTURE



OUR DIRECTION

Our Priority Areas				
Building the Capacity of Staff		Social-Emotional Learning	Academic Intervention	
Teaching and Learning	Learning Environment	Relationships	Leadership	Resources
Our 3 Year Targets				
1. By the end of Semester 1 2027, 75% of students in Year 2 will achieve at or above Decile 5 in On-entry 2. By the end of Semester 1 2027, 60% of students in Year 3 and Year 5 will achieve the Strong proficiency or above in NAPLAN		1. By the end of Semester 2 2027, Boulder Primary School will have an attendance rate of 92%		
Our 3 Year Strategies				
Continue to monitor the effectiveness of all evidence-based programs using data driven practices	Strengthen the implementation of health and wellbeing approaches ensuring they are informed by the health and wellbeing survey	Continue to embed a school culture that promotes a sense of connection	Continue to extend leadership across the school through a model of distributed leadership	Consolidate the planned approach to resources
Consolidate the implementation of evidence-based Numeracy and Literacy programs	Continue to implement a strategic approach to attendance	Continue to build a school environment that creates a sense of belonging	Continue the provision of professional growth opportunities to all graduates and aspiring leaders for the purpose of succession in leadership roles	Continue to monitor Professional Learning and ensure it is available to all staff
Embed structures to support lesson differentiation	Establish a school environment which promotes academic excellence	Continue to promote a school climate that promotes positive relationships	Maintain a consistency with Growth Coaching	Increase technologies with a focus on classroom integration and STEM
Continue to promote a school culture that seeks best practice, quality teaching, and improvement	Consolidate and implement the whole school behaviour policy, including restorative approaches	Continue to provide opportunities for parents to engage in students' learning	Harness a reflective culture and embed observations and feedback	Continue to improve the physical learning environment
Continue to nurture an environment with a collaborative approach to planning, teaching and assessment	Continue to strive to provide a culturally responsive and accessible learning environment	Maintain our robust relationships with local community, mining, and industries	Maximise the impact of the established processes for the induction of new staff through a formalised plan	Develop an effective process to support with workforce planning that includes leave, retirement, and transfers
Continue to embed Teaching for Impact to support teaching and learning excellence		Continue to provide opportunities for students and parents to provide feedback		
Maximise the impact of the established STEM hub - Ngurra Nintipayi, through the integration of technology learning experience into the classroom		Continue to promote a positive public image and brand		